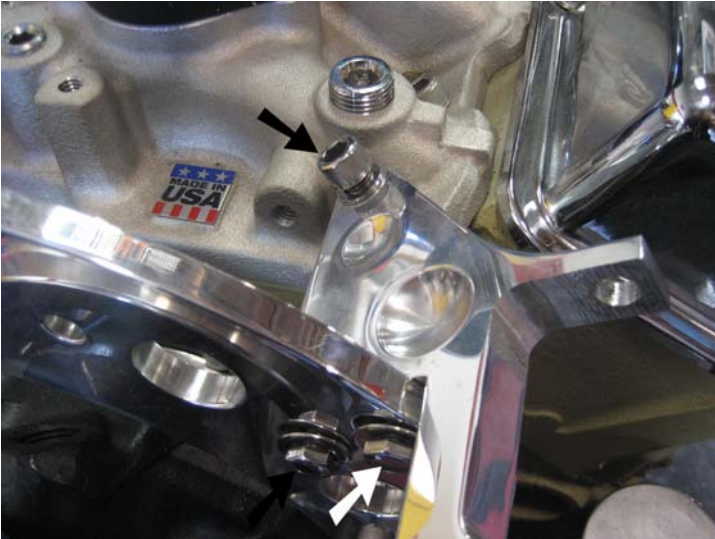




CNC CUSTOMS AND MANUFACTURING, INC.
714) 289-9894

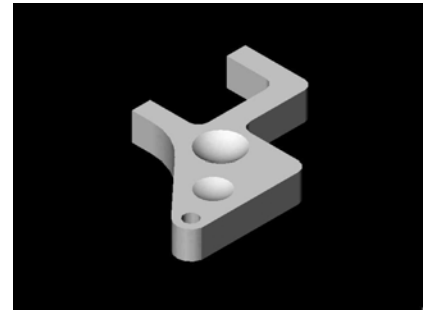
**SMALL BLOCK CHEVY "BRIDGE" ALTERNATOR /
AC BRACKET**

PART # 7750



Install alternator bracket piece using 3/8 16x 1 3/4 bolts in the manifold. And two 1/4 20 x 1 3/4 button heads (with 3/4 o.d. washers) through the "bridge) into the AC bracket

Note: This is on the drivers side of the motor



Your bracket should look like this right now



Install AC compressor onto bracket using 3//8 16 x 5 SHCS and Nut

Note: there are four mounting position on the compressor two are correct. Do not tighten all the way yet.

Install alternator onto bracket using 3/8 16 x 3 3/4 bolt and nut. Do not tighten yet

